

»multifix« series

Seat valves operated by secondary pressure for controlled pressurisation of pneumatic systems. The full cross-section of the regulator is opened at 50% of the input pressure. The filling time can be altered by turning the adjusting screw.

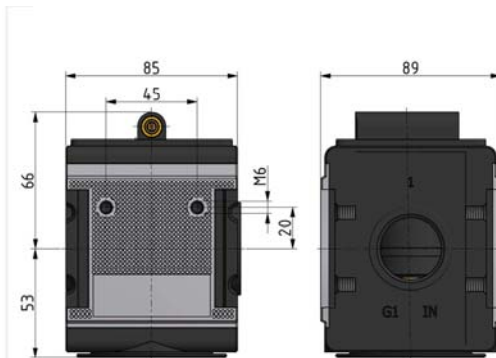
Inlet pressure:	2 - 16 bar
Max. medium temperature:	60 °C
Max. ambient temperature:	60 °C
Sealant:	NBR
Flow rate measurement:	At $P_1 = 6$ bar and pressure drop $\Delta p = 1$ bar

Start-up valve

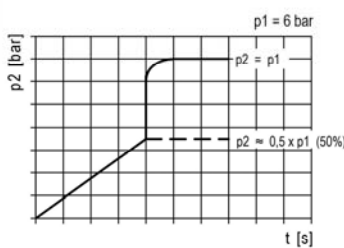
Art. No.	Type No.	Thread	Housing	Flow rate l/min	Size
133143	A 44 F	G 3/4	Die-cast aluminium	10000	4

Accessories

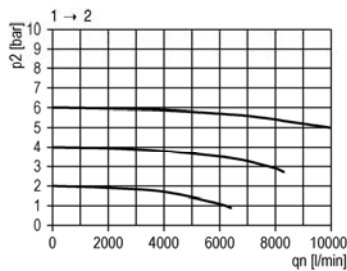
Art. No.	Type No.	Description
135857	KP 45	Coupler pack for modular assembly of several devices



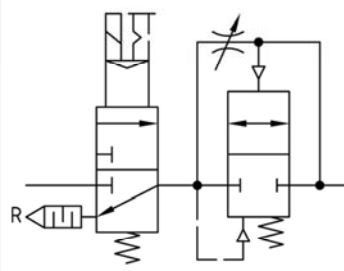
filling characteristic



flow characteristic



operating conditions



symbol

